

Disney  
MARY  
POPPINS  
RETURNS

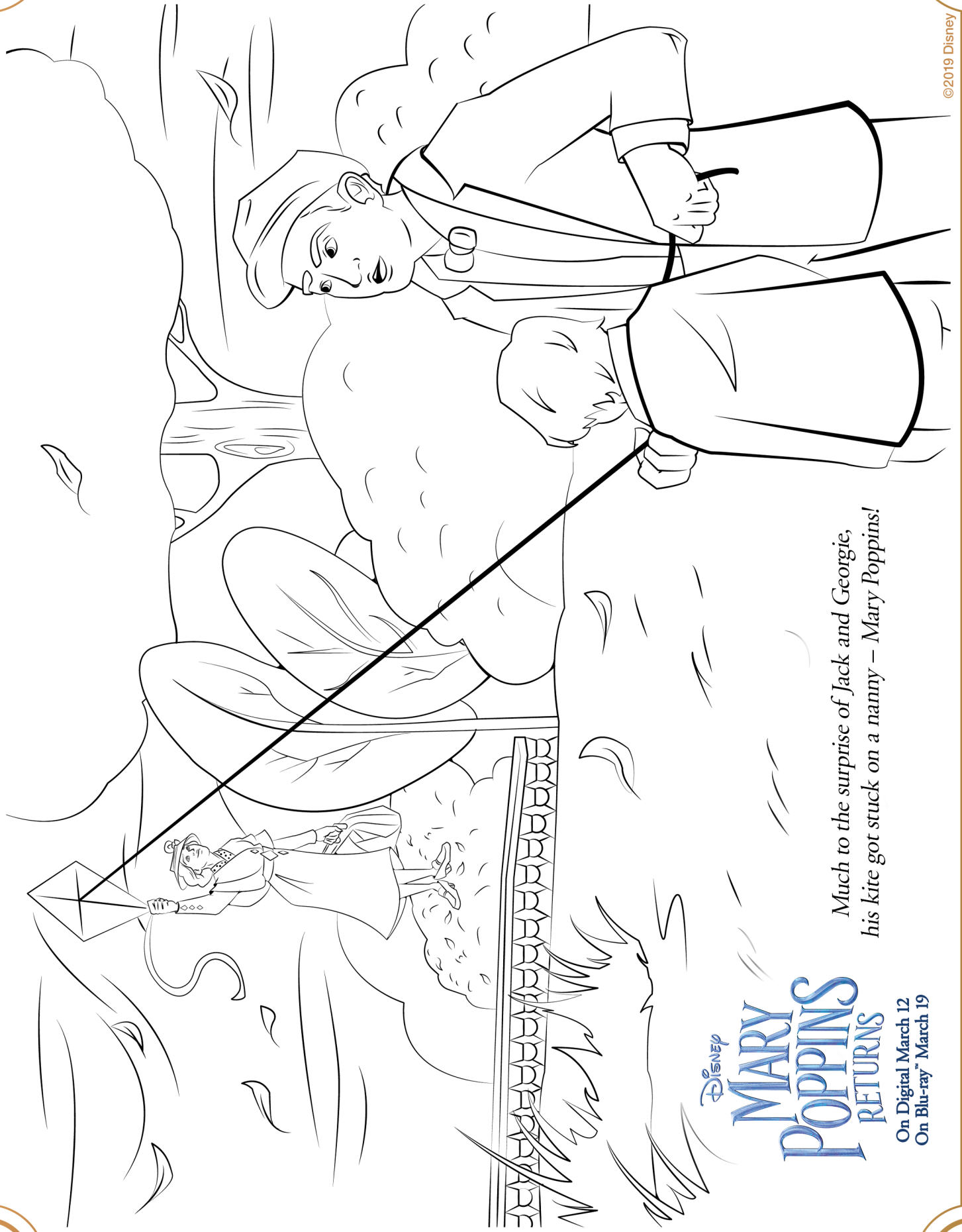
On Digital March 12  
On Blu-ray™ March 19

ACTIVITY PACK

PG PARENTS STRONGLY CAUTIONED  
SOME MATERIAL MAY BE INAPPROPRIATE FOR CHILDREN UNDER 10 YEARS OF AGE

©2019 Disney





©2019 Disney

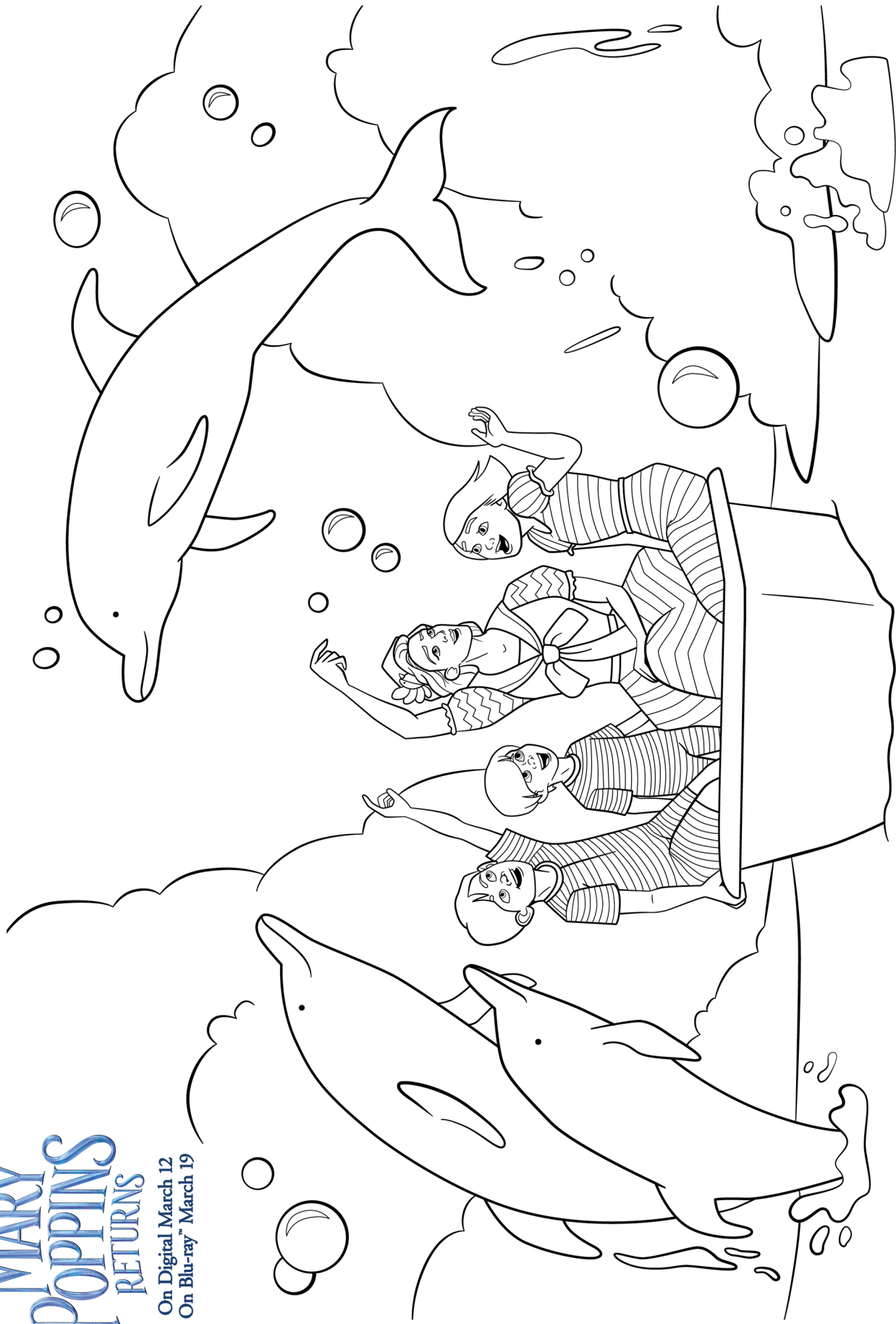
*Much to the surprise of Jack and Georgie,  
his kite got stuck on a nanny – Mary Poppins!*

Disney  
**MARY  
POPPINS  
RETURNS**

On Digital March 12  
On Blu-ray™ March 19

Disney  
**MARY  
POPPINS  
RETURNS**

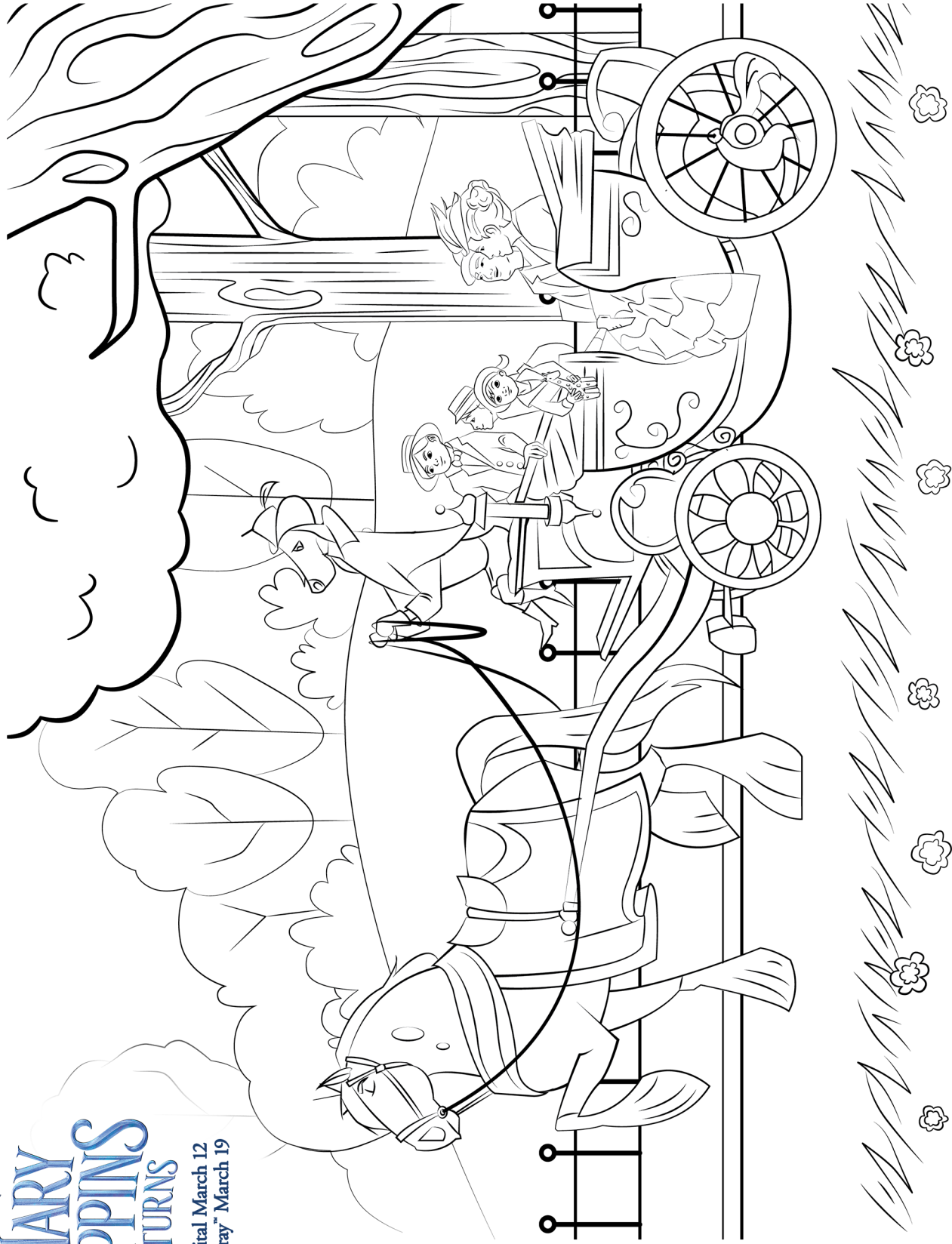
On Digital March 12  
On Blu-ray™ March 19



*Taking a bath has never been so much fun!*

Disney  
**MARY  
POPPINS  
RETURNS**

On Digital March 12  
On Blu-ray™ March 19



*In the porcelain world of a china bowl, Mary Poppins takes Jack and the kids on a magical carriage ride.*



Disney  
**MARY  
POPPINS  
RETURNS**

On Digital March 12  
On Blu-ray™ March 19

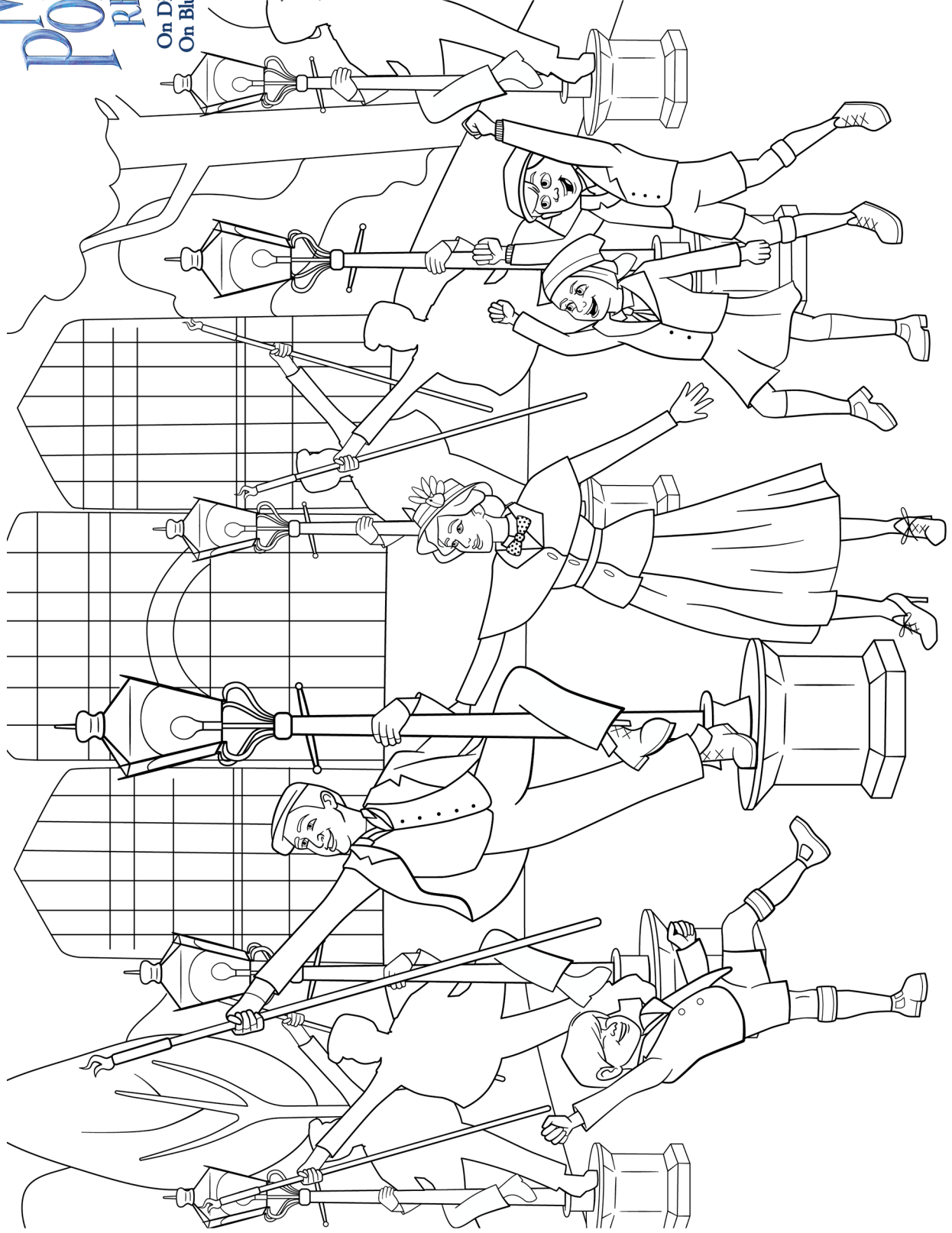
*At the Royal Doulton Music Hall, the entertainers for  
the big show are none other than Jack and Mary Poppins!*





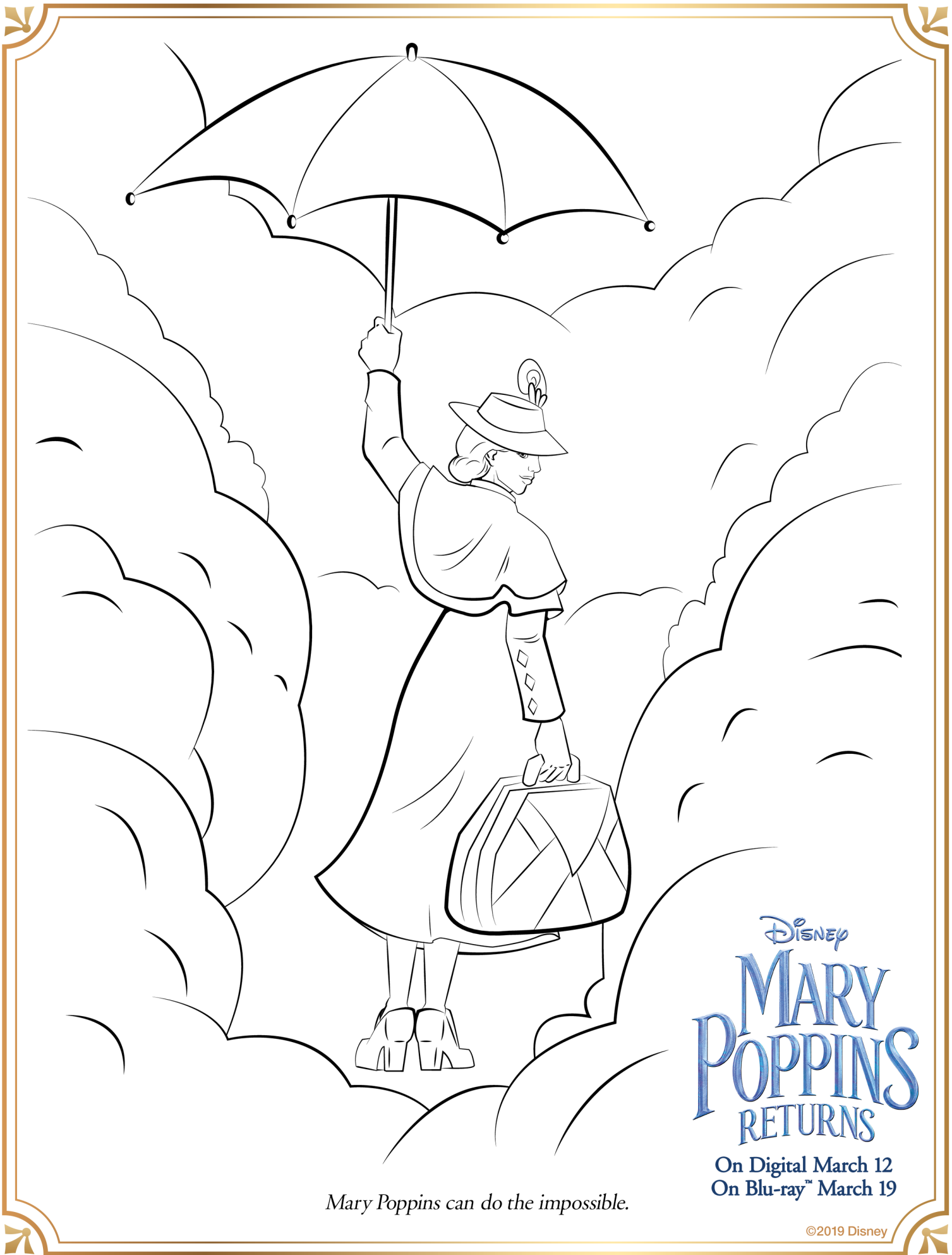
Disney  
**MARY  
POPPINS  
RETURNS**

On Digital March 12  
On Blu-ray™ March 19



*Jack and the Lamplighters show Mary Poppins and the children how to trip a little light fantastic!*





*Mary Poppins can do the impossible.*

Disney  
**MARY  
POPPINS  
RETURNS**

On Digital March 12  
On Blu-ray™ March 19

©2019 Disney

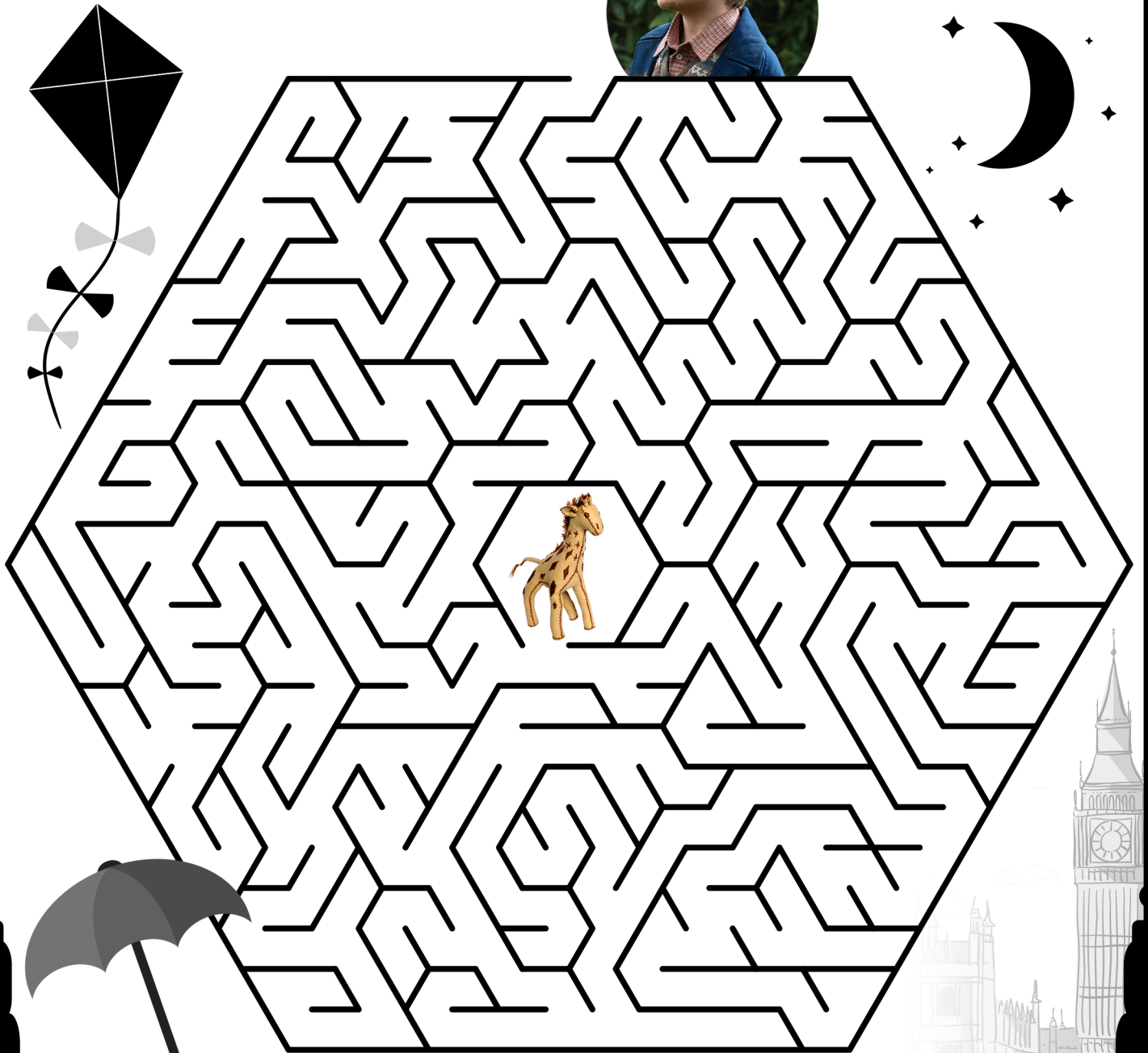


Disney  
**MARY  
POPPINS  
RETURNS**

On Digital March 12  
On Blu-ray™ March 19

## The Place Where Lost Things Go

Georgie has lost his favorite toy, a stuffed giraffe he calls Gillie.  
Can you help him find the way?



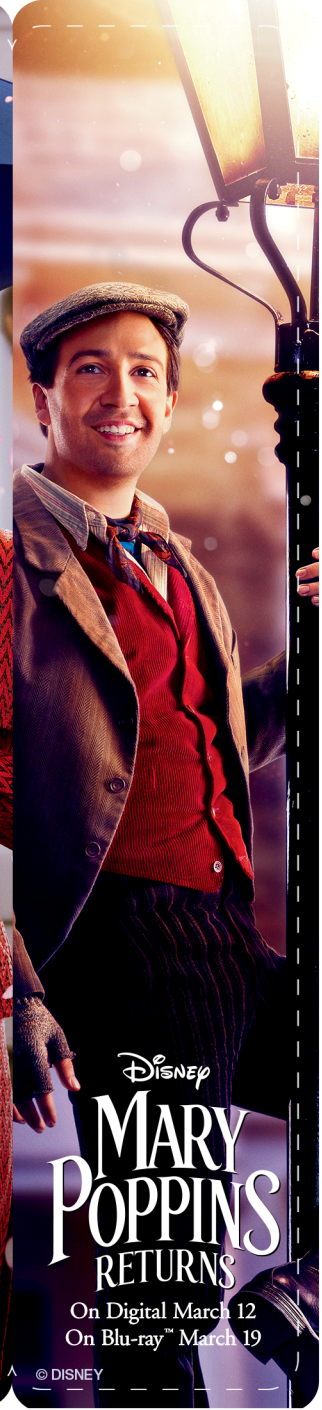


Disney  
**MARY  
POPPINS  
RETURNS**

## *A Cover Is Not The Book(marks)*

Have an adult help print this page out on heavy paper and cut along the dashed lines. Use a straightedge to help fold each bookmark down the center. Ensure the two sides fold together cleanly before gluing together.

On Digital March 12  
On Blu-ray™ March 19



Disney  
**MARY  
POPPINS  
RETURNS**

On Digital March 12  
On Blu-ray™ March 19

## Underneath The Lovely London Sky: Let's go fly a kite!

### What you'll need:

2 sticks (one 20in, one 24in), String, Glue, Tape, Scissors,  
Paper (or plastic garbage bag) 40in wide.

Have an adult help you with the items you need to cut.

### Step 1: Make the frame

- Take the two sticks and put them across each other so that you create a lowercase t-shape. Attach the sticks together with glue.
- Wrap the string around the sticks and tie with a small knot. Trim off excess string with scissors.
- Make 1 notch at the end of each stick. Make sure they are horizontal to the t-shape of the sticks.
- Loop the string around the top notch, then pull it to the end of the stick to the right, wrap around that notch, and continue until you've wrapped all four notches and the string makes a diamond shape. Make sure the string is taut but not too tight.

### Step 2: Making the sail

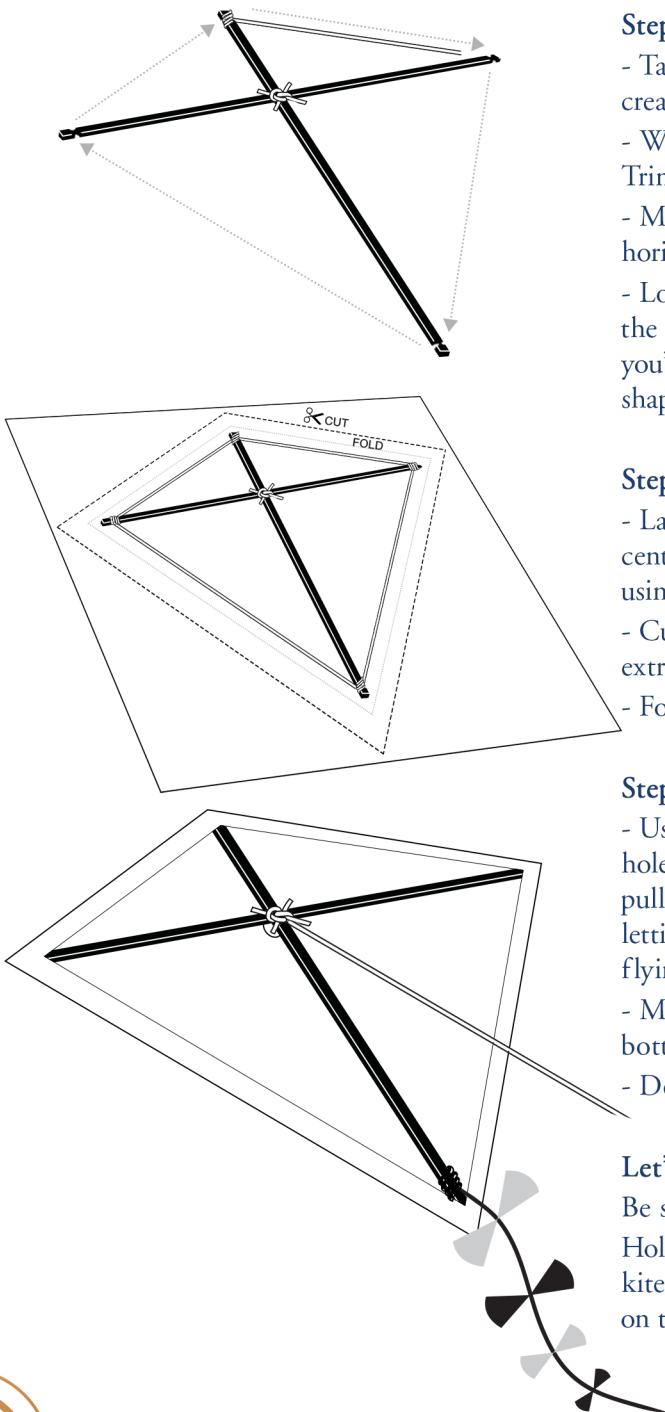
- Lay the paper (or plastic bag) flat and place the frame on the center of it. Using a pen or pencil, outline the frame with a ruler using the strings as a guide, creating a diamond shape.
- Cut the diamond 2in wider than the outline (you'll need the extra material so you can wrap the sail around the frame).
- Fold the edges of the sail over the frame. Glue and tape it down.

### Step 3: Putting it all together

- Use a string that is at least 2in for the flying line. Poke a small hole right above where the two sticks meet in the center. Then pull the string through the hole and tie it around the cross point, letting the flying line hang freely. You can add more string to the flying line to make it longer.
- Make a tail with 6ft string or cloth. Attach the tail to the bottom of the frame at 1ft intervals.
- Decorate your kite!

### Let's go fly a kite!

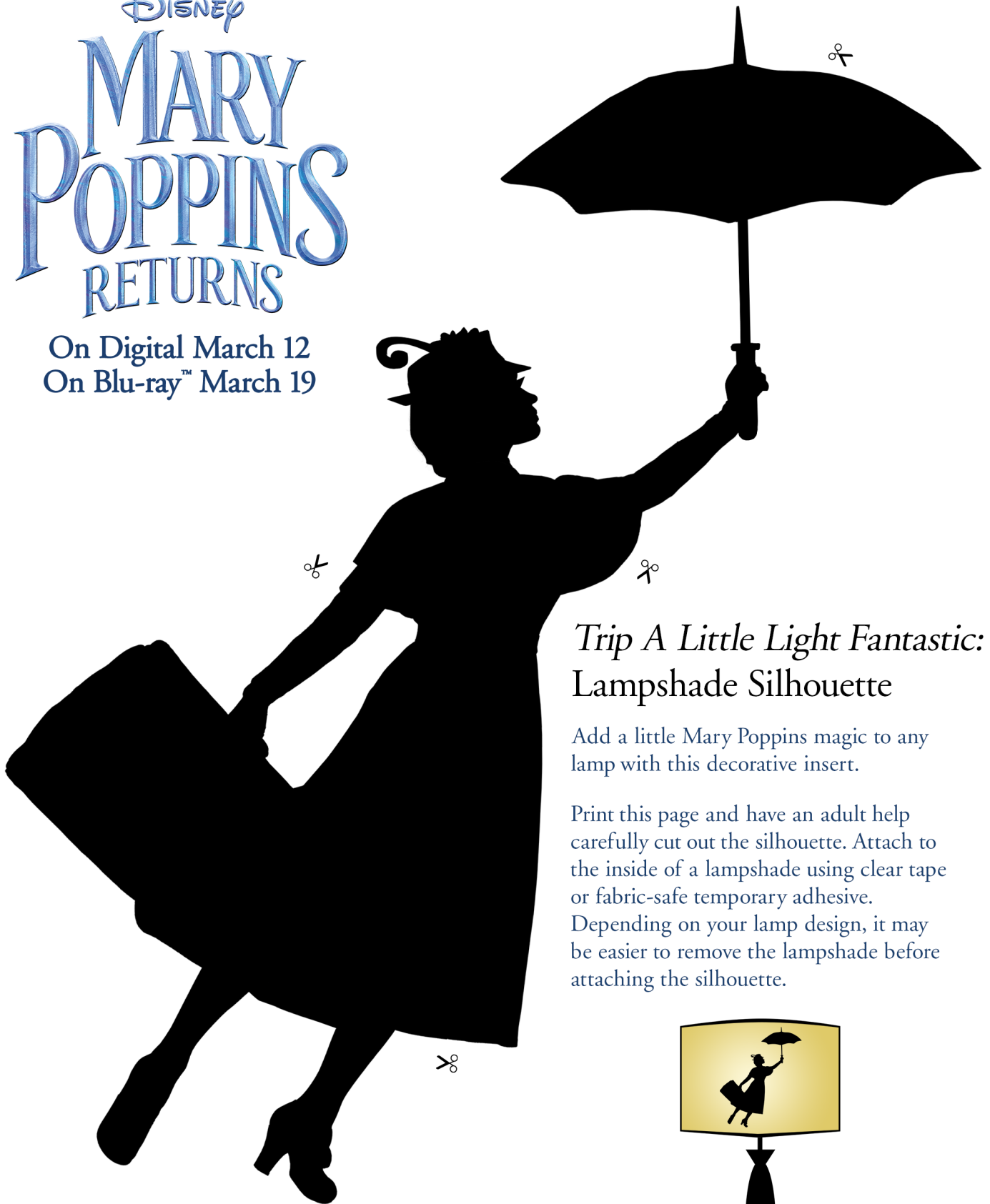
Be sure to take your kite to a spot with no trees or power lines. Hold tight to the kite string and run into the wind. Release the kite as you are running, pushing it upward into the wind. Hang on to your flying line to keep the kite in the air.





Disney  
MARY  
POPPINS  
RETURNS

On Digital March 12  
On Blu-ray™ March 19



*Trip A Little Light Fantastic:*  
Lampshade Silhouette

Add a little Mary Poppins magic to any lamp with this decorative insert.

Print this page and have an adult help carefully cut out the silhouette. Attach to the inside of a lampshade using clear tape or fabric-safe temporary adhesive.

Depending on your lamp design, it may be easier to remove the lampshade before attaching the silhouette.

